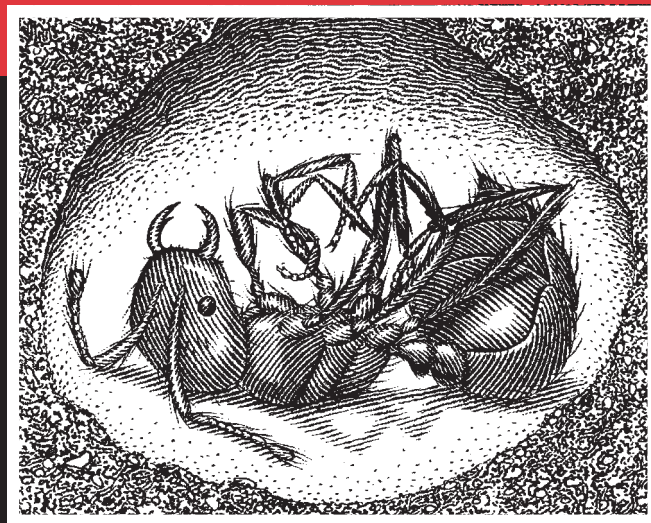


# AMDRO<sup>®</sup>

**PRO** Fire Ant Bait

**KILLS IMPORTED AND  
NATIVE FIRE ANTS  
AND OTHER ANTS**

SPECIMEN



**KILLS THE QUEEN ■ DESTROYS THE MOUND**

<b>Active Ingredient:</b> Hydramethylnon: Tetrahydro-5,5-dimethyl- 2(1 <i>H</i> )-pyrimidinone (3-[4-(trifluoromethyl)phenyl]-1-(2-[4- (trifluoromethyl)phenyl]-ethenyl)-2-propenylidene)hydrazone. . . . .	By wt. 0.73%
<b>Inert Ingredients</b> . . . . .	99.27%
<b>Total</b> . . . . .	100.00%

EPA Reg. No. 241-322

**KEEP OUT OF REACH OF CHILDREN  
CAUTION! / PRECAUCION!**

Si usted no entiende la etiqueta, busque a alguien para que se la explique a usted en detalle.  
(If you do not understand this label, find someone to explain it to you in detail.)

See Additional Precautionary Statements Inside.



## PRECAUTIONARY STATEMENTS

### HAZARDS TO HUMANS (AND DOMESTIC ANIMALS)

# CAUTION!

**May be harmful if swallowed.** Avoid contact with skin, eyes, and clothing.

Personal Protective Equipment (PPE): Applicators and other handlers must wear:

- Long-sleeved shirt and long pants
- Waterproof gloves
- Shoes plus socks

Follow manufacturer's instructions for cleaning/maintaining PPE. If no such instructions for washables, use detergent and hot water. Keep and wash PPE separately from other laundry.

Engineering Control Statements: When handlers use closed systems, enclosed cabs, or aircraft in a manner that meets the requirements listed in the Worker Protection Standard (WPS) for agricultural pesticides [40 CFR 170.240(d)(4-6)], the handler PPE requirements may be reduced or modified as specified in the WPS.

#### User Safety Recommendations

Users Should:

- Wash hands before eating, drinking, chewing gum, using tobacco or using the toilet.
- Remove clothing immediately if pesticide gets inside. Then wash and put on clean clothing.
- Remove PPE immediately after handling this product. Wash the outside of gloves before removing. As soon as possible, wash thoroughly and change into clean clothing.

**Statement of Practical Treatment:** If swallowed, drink one or two glasses of water and induce vomiting by touching back of throat with finger. Do not induce vomiting or give anything by mouth to an unconscious person. Get medical attention.

**Environmental Hazards:** This product is toxic to fish. Do not apply directly to water, to areas where surface water is present, or to intertidal areas below the mean high water mark. Do not contaminate water when disposing of equipment washwaters. Do not apply when weather conditions favor drift from target areas.

**General Information:** AMDRO Pro is a bait which is highly attractive to imported and native fire ants and other ants. Worker ants carry it into the mound as food for the colony. They eat it and feed it to the queen. AMDRO Pro starts to kill ants immediately. In about a week the queen is dead, which destroys the mound.

Further information regarding ants may be obtained from your Cooperative Agricultural Extension Service.

#### DIRECTIONS FOR USE

It is a violation of Federal law to use this product in a manner inconsistent with its labeling.

Do not apply this product in a way that will contact workers or other persons, either directly or through drift. Only protected workers may be in the area during application. For any requirements specific to your state or tribe, consult the agency responsible for pesticide regulation.

#### AGRICULTURAL USE REQUIREMENTS

Use this product only in accordance with its labeling and with the Worker Protection Standard, 40 CFR Part 170. This standard contains requirements for the protection of agricultural workers on farms, forests, nurseries, and greenhouses and handlers of agricultural pesticides. It contains requirements for training, decontamination, notification and emergency assistance. It also contains specific instructions and exceptions pertaining to the statements on this label about personal protective equipment (PPE) and restricted-entry interval. The requirements on this box only apply to uses of this product that are covered by the Worker Protection Standard.

Do not enter or allow worker entry into treated areas during the restricted entry interval (REI) of 12 hours.

PPE required for early entry to treated areas that is permitted under the Worker Protection Standard and that involves contact with anything that has been treated, such as plants, soil, or water, is:

- Coveralls
- Waterproof Gloves
- Shoes plus Socks

#### NON-AGRICULTURAL USE REQUIREMENTS

The requirements in this box apply to uses of this product that are NOT within the scope of the Worker Protection Standards for agricultural pesticides (40 CFR Part 170). The WPS applies when this product is used to produce agricultural plants on farms, forests, nurseries, or greenhouses.

- Keep unprotected persons out of treated area during pesticide applications.

**Outdoor Use:** AMDRO Pro controls imported and native fire ants and other ants, such as harvester ants and bigheaded ants. AMDRO Pro is for use on lawns, landscaped areas, golf courses, and other noncropland areas such as airports, roadsides, cemeteries, commercial grounds, parks, school grounds, picnic grounds, athletic fields and other recreational areas, and as well on grounds surrounding poultry houses (excluding runs and ranges) or corrals and other animal holding areas. Avoid direct exposure of animals to AMDRO Pro granules.

AMDRO Pro may be used in and around container or field-grown ornamental and non-bearing nursery stock, and on sod farms (commercial turf). AMDRO Pro may also be applied to the soil around non-bearing fruit or nut trees. Do not harvest food/feed from non-bearing nursery stocks within one year of application.

Do not graze or feed lawn or sod clippings to livestock.

Treatment	Rate	Comments
Individual mounds: imported and native fire ants harvester ants bigheaded ants	2 to 5 level tablespoons	Distribute bait uniformly around the mound. Do not disturb the mound. Do not apply more than 2.0 lb. per acre. Do not contaminate kitchen utensils by use or storage.
Broadcast treatment: imported and native fire ants harvester ants	1.0 - 1.5 lb./acre [2.0 - 3.0 oz./5,000 square feet]	Broadcast bait uniformly with ground (granular spreaders) or aerial equipment.

Treatment	Rate	Comments
Broadcast treatment: bigheaded ants	1.0 - 2.0 lb./acre [2.0 - 4.0 oz./5,000 square feet]	Broadcast bait uniformly with ground (granular spreaders) or aerial equipment.

Apply when ants are active (typically when soil temperature is greater than 60°F).

Repeat applications as needed.

**Pasture and Rangeland Use:** AMDRO Pro controls imported and native fire ants and other ants, such as harvester ants and bigheaded ants. AMDRO Pro may only be applied to pasture and rangeland for the control of ants in the following states: Alabama, Arkansas, Florida, Georgia, Louisiana, Mississippi, North Carolina, Oklahoma, South Carolina, Tennessee, Texas, and Virginia. Use of AMDRO Pro on pasture and rangeland in states other than those listed is unlawful. Reference the table below for application directions. Applications of AMDRO Pro to pastures and rangeland may not exceed a maximum rate of 8.0 pounds per acre per year, and AMDRO Pro may not be applied more than 4 times per year with minimum application intervals of 90 days. Do not cut and bale hay from pastures and rangeland treated with AMDRO Pro until 7 days after the bait application is made. The restrictions on the use of AMDRO Pro on cutting and baling hay do not apply when the treated pasture and rangeland is used solely to support companion animals (e.g., horses, llamas). These companion animals cannot be used for food or feed.

Treatment	Rate	Comments
Individual mounds: imported and native fire ants harvester ants bigheaded ants	2 to 5 level tablespoons	Distribute bait uniformly around the mound. Do not disturb the mound. Do not apply more than 2.0 lb. per acre. Do not contaminate kitchen utensils by use or storage.
Broadcast treatment: imported and native fire ants harvester ants	1.0 - 1.5 lb./acre [2.0 - 3.0 oz./5,000 square feet]	Broadcast bait uniformly with ground (granular spreaders) or aerial equipment.
Broadcast treatment: bigheaded ants	1.0 - 2.0 lb./acre [2.0 - 4.0 oz./5,000 square feet]	Broadcast bait uniformly with ground (granular spreaders) or aerial equipment.

Apply when ants are active (typically when soil temperature is greater than 60°F).

**Indoor Use:** AMDRO Pro controls imported and native fire ants and other ants, such as harvester ants and bigheaded ants. For use in homes, residential, commercial and other structures, and in the non-food/feed areas of institutional, warehousing and commercial establishments, such as groceries and supermarkets, hotels and motels, hospitals and nursing homes, schools, laboratories, computer facilities, food storage areas, sewers, transportation equipment, pet shops, or zoos, and in the inedible product areas of meat or poultry plants. Nonfood areas are areas such as garbage rooms, lavatories, floor drains (to sewers), entries, and

vestibules, offices, locker rooms, machine rooms, boiler rooms, garages, mop closets and storage (after canning or bottling).

In the home, all food processing surfaces and utensils must be covered during treatment or thoroughly washed before use. Exposed food must be covered or removed.

Using a duster, or similar equipment, apply bait ONLY into cracks and crevices or other inaccessible areas such as structural voids, unfinished attics or crawl spaces. Apply 0.25 to 0.5 ounce per crack, crevice or other inaccessible area where ants are entering the structure or where ants are nesting. Clean up any loose or excess bait. Apply evenly in unfinished attics and crawl spaces at a rate of 0.25 ounce per 100 sq. feet only if the space is secured or otherwise inaccessible to children or domestic animals.

## STORAGE AND DISPOSAL

**Prohibitions:** Do not contaminate water, food or feed by storage or disposal. Open dumping is prohibited.

**Storage:** Store in cool, dry, secure place and keep container tightly closed. Store container away from pets. This product is formulated in an oil bait. Prolonged exposure to air may turn oil rancid and reduce the attractiveness of the bait. Use within 3 months after opening.

**Pesticide Disposal:** Wastes resulting from the use of this product may be disposed of on site or at an approved waste disposal facility.

**Container Disposal:** Completely empty bag into application equipment. Then dispose of empty bag in a sanitary landfill or by incineration, or, if allowed by State and local authorities, by burning. If burned, stay out of smoke.

**General:** Consult Federal, State, or local disposal authorities for approved alternative procedures.

## DISCLAIMER

The label instructions for the use of this product reflect the opinion of experts based on field use and tests. The directions are believed to be reliable and should be followed carefully. However, it is impossible to eliminate all risks inherently associated with use of this product. Crop injury, ineffectiveness or other unintended consequences may result because of such factors as weather conditions, presence of other materials, or the use or application of the product contrary to label instructions all of which are beyond the control of American Cyanamid Company. All such risks shall be assumed by the user. American Cyanamid Company warrants only that the material contained herein conforms to the chemical description on the label and is reasonably fit for the use therein described when used in accordance with the directions for use, subject to the risks referred to above.

Any damages arising from a breach of this warranty shall be limited to direct damages and shall not include consequential commercial damages such as loss of profits or values or any other special or indirect damages.

American Cyanamid Company makes no other express or implied warranty, including any other express or implied warranty of FITNESS or of MERCHANTABILITY.

In case of an emergency endangering life or property involving this product, call collect, day or night, Area Code 973-683-3100.

