

ThermaCELL® Mosquito Repellent Candle Lantern

{Select appropriate marketing verbiage from "Marketing Text" section}

Active Ingredient:

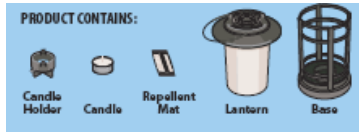
d-cis/trans allethrin 21.97%

Other Ingredients 78.03%

Total 100.00%

Keep Out of Reach of Children
CAUTION
See back [side] [bottom] panel for additional precautionary statements.

Product Contains



Contains

{Number} [Reusable] Lantern(s)
{Number} [Reusable] Candle Holder(s)
{Number} [Product Name] Candle(s)
Net Weight 0.53 oz. [each]
{Number} [Product Name] [Insect] Repellent Mat(s)
Net Weight 0.08 oz. [each]

EPA Reg. No. 71910-4

EPA Est. 71998-THA-1

Manufactured for:
The Schawbel Corporation
26 Crosby Drive
Bedford, MA 01730
Toll Free: 1-8-NO SKEETERS
Email: Consumerquestions@thermacell.net

[Made and Printed in Italy]
Mats Made in Italy
Manufactured in Thailand

Protected by one or more of the following U.S. Patents: 5,700,430; D300,606 [; D423,071; 6,033,212 C1]

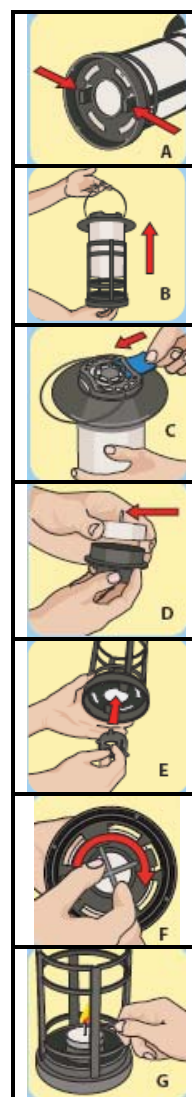
DIRECTIONS FOR USE

It is a violation of Federal law to use this product in a manner inconsistent with its labeling.

Use Restrictions: Only for outdoor use as an insect repellent. Do not use indoors, in tents or any enclosed area. Cover or remove all exposed food. Before lighting, make sure that candleholder has been secured by turning it clockwise until it clicks, and that lantern globe is securely on lantern base. [Lantern globe will click into place.] Place lantern on a level stable surface or use handle to hang from a non-flammable [metal] garden hook that has been securely inserted into the ground and confirmed to be stable. Do not cover lantern with any material while in use. Do not move lantern when lit. If hanging lantern from a hook, allow unit to cool before removing. To avoid fire hazard, do not place mats, matches or other foreign matter near candle flame. Do not place lantern near underground wires or gas lines. Do not place lantern near combustible material such as dry vegetation, clothing or fuels. Do not leave lantern unattended or use in windy conditions. Never burn candle unattended. Clean with a damp cloth only when the lantern is cool and inactive. Do not use anything other than ThermaCELL® mats and candles in the lantern. Never cut, bend or alter shape of mat. Mats may cause staining; do not let mats contact other surfaces. Failure to follow these instructions could result in personal injury or property damage.

Instructions for Assembling and Using Lantern:

1. Remove lantern from base by squeezing latch tabs on lantern bottom (*A*) and pulling out lantern top (*B*).
2. Remove bag from inside lantern and take out contents: ThermaCELL® repellent mat, [product name] candle, and candle holder.
3. Take ThermaCELL® repellent mat out of wrapper and insert under grill on lantern top (*C*).
4. Place [product name] candle into candle holder with wick upright (*D*).
5. While holding lantern base upright, insert [product name] candle and candle holder up through bottom (*E*) and turn right (clockwise) in direction of arrow (*F*) until candle holder clicks into place. **Make sure candle holder clicks into place.**
6. Set lantern base down on a level surface and light candle (*G*).
7. Replace lantern on the base (*H*). **Be sure to push down on lantern until it clicks into base.**



8. When finished using lantern, extinguish candle by blowing into grill top.



To Replace Candle and/or Repellent Mat: Replace candle and repellent mat only when lantern is cool and not in use. Remove candle holder from base of lantern by turning left (counterclockwise). Discard used candle. Insert new candle. Use only ThermaCELL® candles; other candles may not provide correct amount of heat to optimally release repellent, reducing effectiveness. To replace a used repellent mat, push the used repellent mat out by inserting a new mat.

Storage and Disposal

Do not contaminate water, food or feed by storage or disposal.

Pesticide Storage: Store lantern and unused mats in original packaging in a cool, dry place inaccessible to children and pets. **Pesticide Disposal:** Non-refillable container; do not refill or reuse this container. **Used Mats:** Do not reuse empty packaging; place empty packaging and used mats in trash or offer for recycling, if available. **Unused mats:** Call your local solid waste agency for disposal instructions. Never place unused mats down any indoor or outdoor drain. **Candle:** After allowing candle and lantern to cool, remove used up candle and place in trash. Retain candle holder for future lantern use. **For unwanted lantern:** Place in trash or offer for recycling, if available.
Lot Number: {Description of where lot number can be found}

PRECAUTIONARY STATEMENTS

Hazards to Humans and Domestic Animals

CAUTION: Harmful if inhaled. Avoid breathing vapors. Remove and wash contaminated clothing before reuse.

First Aid

If Inhaled:	<ul style="list-style-type: none">• Move person to fresh air.• If person is not breathing, call 911 or an ambulance, then give artificial respiration, preferably by mouth-to-mouth, if possible.• Call a poison control center or doctor for further treatment advice.
Have the product container or label with you when calling a poison control center or doctor, or going for treatment. [For additional information on this pesticide product (including health concerns, medical emergencies or pesticide incidents) you may call 1-800-753-3837 [twenty-four] 24 hours per day, [seven] 7 days per week.]	

{Note: The first aid statements' grid format will be used if market label space permits; otherwise a paragraph format will be used.}

Physical and Chemical Hazards

Do not touch the grill while the lantern is in use; the grill is hot while in use.

Environmental Hazards

This product is toxic to fish, shrimp and aquatic invertebrates. Do not apply directly to water. Do not contaminate water when cleaning equipment or disposing of equipment wash water or rinsate. Drift may be hazardous to aquatic organisms in water adjacent to treated areas.

Warranty and Disclaimers: Seller will not be held responsible for damage, injury or poor performance caused by use of other candles or repellent mats.

[**Guarantee:** Lantern is guaranteed to last {number} year[s] from date of purchase. If [the] lantern fails to perform to your satisfaction, send the lantern and receipt to {company name} for a full refund of purchase price or repair or replacement.]

ThermaCELL® is a Registered Trademark of the Schawbel Corporation

{Mat Label}

ThermaCELL® Mosquito Repellent Candle Lantern Mat	
Active Ingredient:	
d-cis/trans allethrin	21.97%
Other Ingredients	<u>78.03%</u>
Total	100.00%

Keep Out of Reach of Children
CAUTION
See outer carton for additional precautionary statements and Directions for Use.
Net Weight: 0.08 oz.
EPA Reg. No. 71910-4 EPA Est. 43917-ITA-1
Manufactured for:
The Schawbel Corporation
26 Crosby Drive
Bedford, MA 01730
Made [and Printed] in Italy

{Lantern Label}

{Lantern Top}

{Lantern Base}

ATTENTION – HOT SURFACE
Insert mat under grill.

ThermaCELL® Mosquito Repellent Candle Lantern
ATTENTION – HOT SURFACE
Keep Out of Reach of Children
CAUTION

Read *Directions for Use* and *Precautionary Statements* on box prior to use. Only for outdoor use as an insect repellent. Do not use indoors, in a tent or enclosed area. Do not touch the grill while in use; grill is hot while in use. Use only ThermaCELL® Repellent Candle Lantern mats and candles in this lantern. Never leave burning candle unattended. Do not place near combustible materials such as dry vegetation, clothing or fuels. Place on a level, stable surface or hang from a stable garden hook. Do not move lantern after it is lit.

The Schawbel Corporation
26 Crosby Drive
Bedford, MA 01730
EPA Reg. No. 71910-4 EPA Est. 71998-THA-1
[U.S. Patent Numbers 6,033,212 C1; 5,700,430; D300,606]
[ThermaCELL® is a Registered Trademark of the Schawbel Corporation]

{Refill Labeling}

**ThermaCELL® Mosquito Repellent Candle Lantern
REFILLS**

{Select appropriate marketing verbiage from "Marketing Text" section}

Active Ingredient:

d-cis/trans allethrin	21.97%
Other Ingredients	<u>78.03%</u>
Total	100.00%

<p>Keep Out of Reach of Children CAUTION See back [side] [bottom] panel for additional precautionary statements.</p>
--

[This Package] Contains
 {Number} [Product Name] Candle(s)
 Net Weight 0.53 oz. [each]
 {Number}[Product Name] [Insect] Repellent Mat(s)
 Net Weight 0.08 oz. [each]

EPA Reg. No. 71910-4 EPA Est. 71998-THA-1

Manufactured for:
The Schawbel Corporation
 26 Crosby Drive
 Bedford, MA 01730
 Toll Free: 1-8-NO SKEETERS
 Email: Consumerquestions@thermacell.net

[Made and Printed in Italy]
 Mats Made in Italy
 Manufactured in Thailand

Protected by one or more of the following U.S. Patents: 5,700,430; D300,606 [; D423,071; 6,033,212 C1]

DIRECTIONS FOR USE

It is a violation of Federal law to use this product in a manner inconsistent with its labeling.

Use Restrictions: Only for outdoor use as an insect repellent. Do not use indoors, in tents or any enclosed area. Cover or remove all exposed food. Before lighting, make sure that candleholder has been secured by turning it clockwise until it clicks, and that lantern globe is securely on lantern base. [Lantern globe will click into place.] Place lantern on a level stable surface or use handle to hang from a non-flammable [metal] garden hook that has been securely inserted into the ground and confirmed to be stable. Do not cover lantern with any material while in use. Do not move lantern when lit. If hanging lantern from a hook, allow unit to cool before removing. To avoid fire hazard, do not place mats, matches or other foreign matter near candle flame. Do not place lantern near underground wires or gas lines. Do not place lantern near combustible material such as dry vegetation, clothing or fuels. Do not leave lantern unattended or use in windy conditions. Never burn candle unattended. Clean with a damp cloth only when the

lantern is cool and inactive. Do not use anything other than ThermaCELL® mats and candles in the lantern. Never cut, bend or alter shape of mat. Mats may cause staining; do not let mats contact other surfaces. Failure to follow these instructions could result in personal injury or property damage.

Instructions for Assembling and Using Lantern:

1. Remove lantern from base by squeezing latch tabs on lantern bottom and pulling out lantern top.
2. Remove ThermaCELL® repellent mat and candle from refill box.
3. Take ThermaCELL® repellent mat out of wrapper and insert under grill on lantern top.
4. Place candle into candle holder with wick upright.
5. While holding lantern base upright, insert candle and candle holder up through bottom and turn right (clockwise) in direction of arrow until candle holder clicks into place. Make sure candle holder clicks into place.
6. Set lantern base down on a level surface and light candle.
7. Replace lantern on the base. Be sure to push down on lantern until it clicks into base.
8. When finished using lantern, extinguish candle by blowing into grill top.

To Replace Candle and/or Repellent Mat: Replace candle and repellent mat only when lantern is cool and not in use. Remove candle holder from base of lantern by turning left (counterclockwise). Discard used candle. Insert new candle. Use only {product name} candles; other candles may not provide correct amount of heat to optimally release repellent, reducing effectiveness. To replace a used repellent mat, push the used repellent mat out by inserting a new mat.

Storage and Disposal

Do not contaminate water, food or feed by storage or disposal.

Pesticide Storage: Store lantern and unused mats in original packaging in a cool, dry place inaccessible to children and pets. **Pesticide Disposal:** Non-refillable container; do not reuse or refill container. **Used Mats:** Do not reuse empty packaging; place empty packaging and used mats in trash or offer for recycling if available. **Unused mats:** Call your local solid waste agency for disposal instructions. Never place unused mats down any indoor or outdoor drain. **Candle:** After allowing candle and lantern to cool, remove used up candle and place in trash. Retain candle holder for future lantern use.

Lot Number: {Description of where lot number can be found}

PRECAUTIONARY STATEMENTS

Hazards to Humans and Domestic Animals

CAUTION: Harmful if inhaled. Avoid breathing vapors. Remove and wash contaminated clothing before reuse.

First Aid

If Inhaled:	<ul style="list-style-type: none">• Move person to fresh air.• If person is not breathing, call 911 or an ambulance, then give artificial respiration, preferably by mouth-to-mouth, if possible.• Call a poison control center or doctor for further treatment advice.
Have the product container or label with you when calling a poison control center or doctor, or going for treatment. [For additional information on this pesticide product (including health concerns, medical emergencies or pesticide incidents) you may call 1-800-753-3837 [twenty-four] 24 hours per day, [seven] 7 days per week.]	

{Note: The first aid statements' grid format will be used if market label space permits; otherwise a paragraph format will be used.}

Physical and Chemical Hazards

Do not touch the grill while the lantern is in use; the grill is hot while in use.

Environmental Hazards

This product is toxic to fish, shrimp and aquatic invertebrates. Do not apply directly to water. Do not contaminate water when cleaning equipment or disposing of equipment wash water or rinsate. Drift may be hazardous to aquatic organisms in water adjacent to treated areas.

Warranty and Disclaimers: Seller will not be held responsible for damage, injury or poor performance caused by use of other candles or repellent mats.

[Guarantee: Lantern is guaranteed to last {number} year[s] from date of purchase. If [the] lantern fails to perform to your satisfaction, send the lantern and receipt to {company name} for a full refund of purchase price or repair or replacement.]

ThermaCELL® is a Registered Trademark of the Schawbel Corporation

*{Optional Marketing Language, Symbols and Graphics}
{Marketing Text for use on boxes:}*

- REFILLS available
- For use in [product name] lantern
- Also works on [repels] black flies
- Buy one get one free
- Coupon [{\$] {number} Rebate[s]] inside. Rebate inside.
- Effective
- Refills [are] available
- Value {or other descriptive term} Pack: {number} dollar savings [off regular price]
- Value {or other descriptive term} Pack: {number} [free] refills [lantern.]

Repellency

{Note: Maximum number of hours claims are calculated based on how many mats are in the package; e.g., 3 mats provide a maximum of 12 hours (3 mats multiplied by 4 hours per mat) repellency}

- [Each] candle lasts a maximum of 4 hours.
- [Each] mat lasts a maximum of 4 hours
- Provides 15' diameter repellency
- Provides 15' x 15' [225 sq. ft.] area of repellency
- Provides 15' x 15' ft of protection from mosquitoes
- Provides 225 sq. ft. of repellency for a maximum of 4 hours [per mat]
- Repellent lasts a maximum of 4 hours [per mat]
- Repels mosquitoes, black flies and other flying insects
- Repels mosquitoes and black flies for a maximum of 4 hours [per mat]
- Repels mosquitoes using a heat-activated repellent mat
- Repels mosquitoes, black flies and other [outdoor] flying insects from an area up to 15' by 15' [from an average size deck or patio]
- Repels mosquitoes, black flies and other [outdoor] insects from an average size deck or patio [from an average size deck, patio] for hours

How [it] [ThermaCELL® Mosquito Repellent][s] Work[s]

- Heat-activated [product name] repellent mat repels mosquitoes, black flies and other [outdoor] flying insects
- Heat activated [product name] mat disperses repellent into air
- [product name] mat releases repellent when heated by candle

Where [Product] {[product name]} is used

For backyard[s], yards, decks, patios, parties, gardening, [other] social events [gatherings], spectator sports, sporting events, and outdoor camping.

Scent

- Place product upwind for maximum repellency

Other

- Refills available wherever Schawbel [ThermaCELL®] repellent products are sold
- The Schawbel Corporation [Schawbel] offers convenient refill kits for use with this product

Handle

- Place lantern on a table or hang from a hook

Mosquitoes, black flies, bugs, and outdoor flying insects can spoil just about any outdoor activity whether you are entertaining guests or working in your backyard. Now you can alleviate the annoyance from these insects for a maximum of four hours; [product name] continuously releases a repellent that repels mosquitoes, black flies, and outdoor flying insects, [for a maximum of {number} hours.]. This product efficiently repels and reduces the annoyance of mosquitoes, black flies, and outdoor flying insects, in an area as large as an average-size deck or patio (15 feet in diameter or 225 square feet [an area 15' by 15'] for a maximum of {number} hours.



[] Denotes alternate/optional language.
{ } Denotes text not printed on market label.